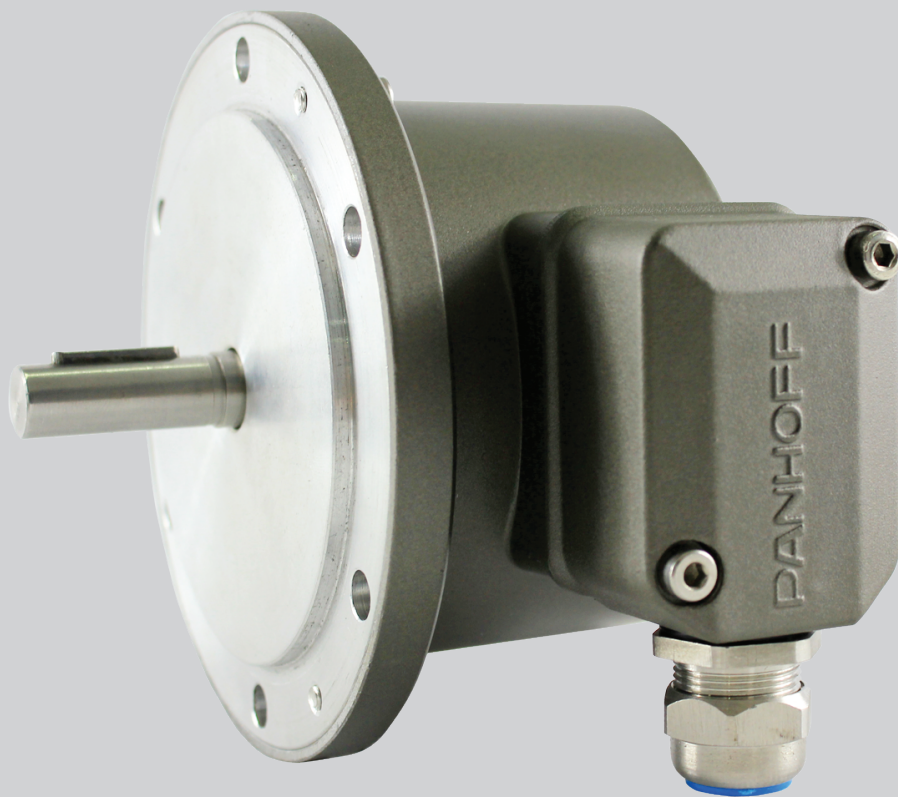


PANHOFF



MP115

***Mechanischer Super
Drehzahlschalter***

Mechanical Overspeed Switches

Eigenschaften

Kompaktes Druckguss- Gehäuse
Ausführung mit Hohlwelle
Elektrische Energie nicht nötig

Features

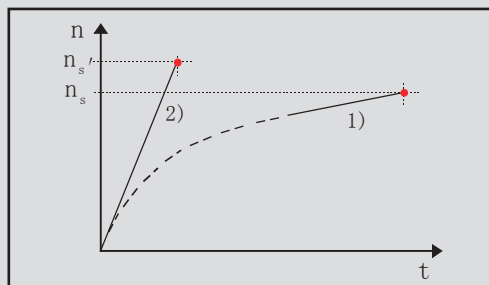
Compact, robust die-cast housing
Overspeed switches with shaft
Electrical energy not necessary

Mechanisch Design

Welle	Edelstahl $\Phi 11$ mm
Gehäuse	$\Phi 105$ mm Aluminiumlegierung
Flansch	EURO Flansch B10
Schutzart	IP55
Gewicht	≈ 0.9 KG
Geschwindigkeit	850 ... 3900
Max. Geschwindigkeit	$1.25 n_s$
Genauigkeit	$\pm 4\%$
Beschleunigungsgeschwindigkeit	$\leq +20\%$
Toleranz	$\approx 3\%$
Drehzahl-Hysteresis	$\approx 40\%$
Temperaturbereich	$-20 \dots +130$ °C

Mechanical design

Shaft	Stainless steel $\Phi 11$ mm
Housing	$\Phi 105$ mm Aluminium die-cast alloy
Flange	EURO flange B10
Protection	IP55
Weight approx	≈ 0.9 KG
Speed	850 ... 3900
Maximum speed	$1.25 n_s$
Accuracy	$\pm 4\%$
Speed at acceleration	$\leq +20\%$
Tolerance cw to cww	$\approx 3\%$
Speed hysteresis	$\approx 40\%$
Temperature range	$-20 \dots +130$ °C

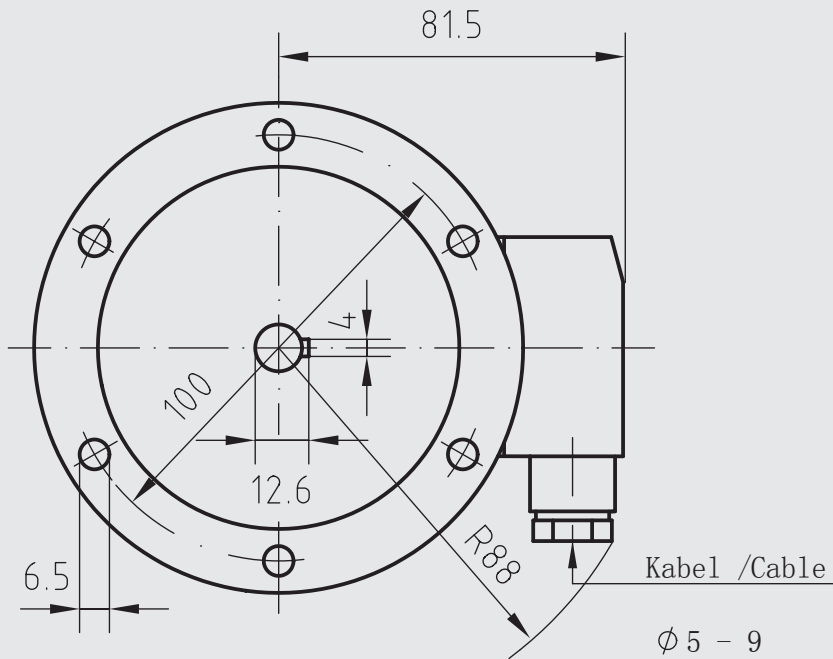


Test conditions for switching speed

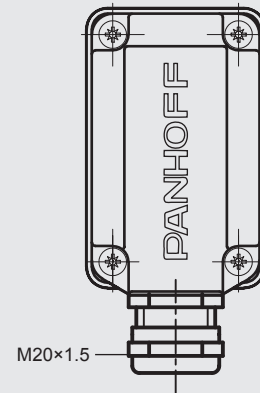
- 1) Drehzahl-Anstieg
Speed rise $\Delta n = 2 \text{ min}^{-1}/\text{s}$
rpm/s
- 2) Drehzahl-Anstieg
Speed rise $\Delta n = 1500 \text{ min}^{-1}/\text{s}$
rpm/s

Dimension

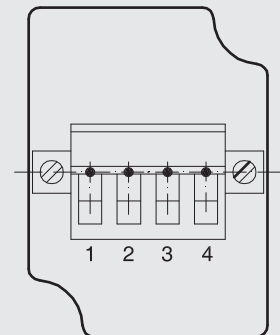
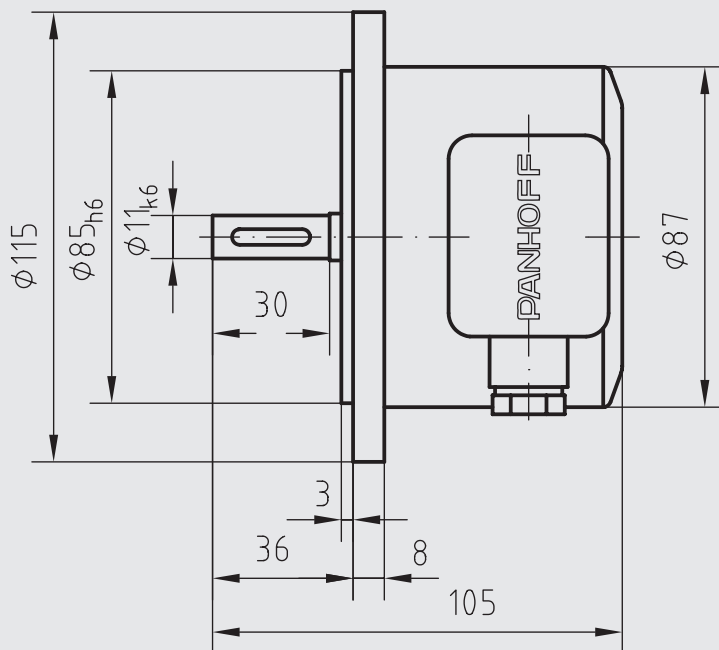
Frontalansicht Front View



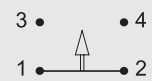
Anschlusskasten Terminal Box



Seitenansicht Side View



Schließer
Make contact



Öffner
Break contact

Type Model		Betriebsgeschwindigkeit Tation speed			
MP115	—	<div style="border: 1px solid black; width: 60px; height: 20px; margin: 0 auto;"></div>			
MP115		850 ... 3900			

Zubehör *Accessories*

Kabel	Cables
--------------	---------------

D1004 - ...

Verbindungskabel

Connecting cable

Montagezubehör	Mounting accessories
-----------------------	-----------------------------

KM2001 - ...

Welle Verbund

Torque arms